



<i>Prepared by</i> Göran Ekman	<i>Printed</i> 2009-09-24	<i>Date</i>	<i>Rev</i> A3	<i>Reference / Project</i> EMS for Firebird
		<i>Document name</i> p:\era\doc general\firebirdsetup2009.docx		

To
EMS administrators

How to setup EMS for Firebird (FB) and optionally move to a new server

1 Scope

This document describes how to setup EMS for running with Firebird SQL. The description is aimed for persons with knowledge of Windows installations.

Things needed:

- 1.1.1 The file **GEL_UPD.DLL**
- 1.1.2 **Firebird installation file**
- 1.1.3 **EMSw.EXE in FB-version (from 8.2 and forward)**

2 Hardware

2.1 General

Same hardware as for Interbase can be used.

2.2 Windows 2003/2008 server

It is possible to run Firebird on Windows 2003/2008 Server. Of course it will work with Windows 2000 server also.

3 Software

3.1 Get the Firebird files

Available at GEL web page <http://gel.se> in the Files section.

Firebird is under GNU, Open License, and therefore no license fees will be charged for the software.

3.2 EMS version

All EMS versions from 8.2 are FB compatible.

3.3 Get the file GEL_UPD.DLL

Available on the EMS install CD or on the old server.

3.4 CMD files

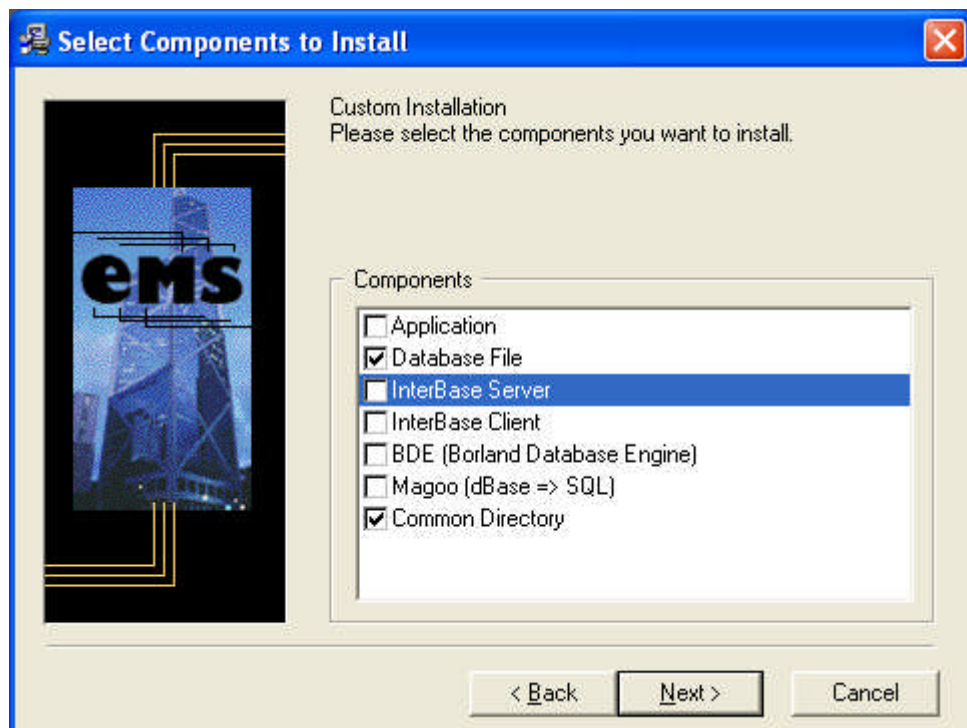
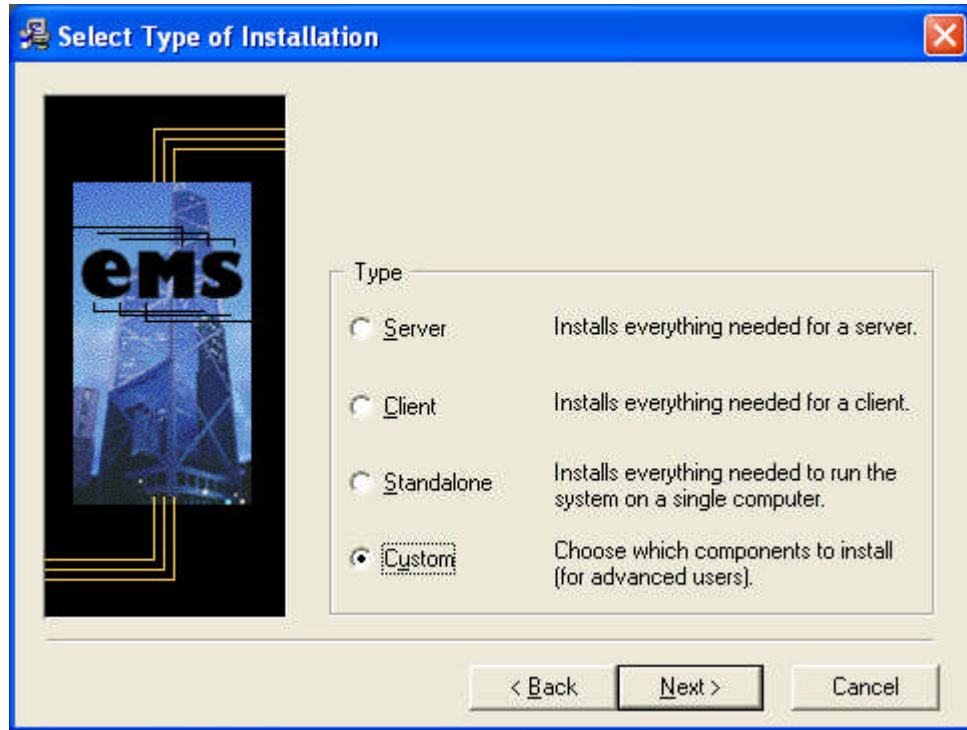
Please make a copy of the CMD files on the old server if you are about to move to a new server. Please contact GEL to get your own setup of CMD files in case you don't have them.



4 Installation step 1 – if EMS is not installed before

4.1 EMS server installation

Perform a standard EMS server installation ON the server but choose Custom.



De-select the Interbase server option but keep the other two.

Finalise the setup and continue to step 3,



5 Step 3 - Firebird installation

5.1 Install Firebird

Perform a normal installation of Firebird. Please remember to install FB as **SUPERSERVER**. Just accept all default values.

If you want more information you can read more in the special **Quick start guide** that is available on GEL homepage.

5.2 Completing with GEL_Udf.dll

Find the file [CD]:\IB\bin\ GEL_UDF.DLL on the EMS CD.
(Or get it from our ftp if you cannot find the CD.)

Copy the file GEL_UDF.DLL to the Firebird UDF directory .
(Normally it is C:\Program files\Firebird\UDF)

5.3 Autostart

Go to Start/Settings/Control Panel/Administrative Settings/Services.

Make sure Firebird Guardian starts automatically when the machine starts.

5.4 Also restart Firebird

...when you are in the Services function.

6 Installing new ODBC drivers

6.1 Interbase ODBC

If there are users that connect to the EMSw database using ODBC they need to get new drivers for Firebird.

6.2 Get the ODBC

There are several brands that can be used with Firebird.

We have experienced that IBPhoenix is working good and it is also freeware.

Collect it at:

http://www.ibphoenix.com/main.nfs?page=ibp_60_odbc

and install it for people that need to have a ODBC driver on their machines.





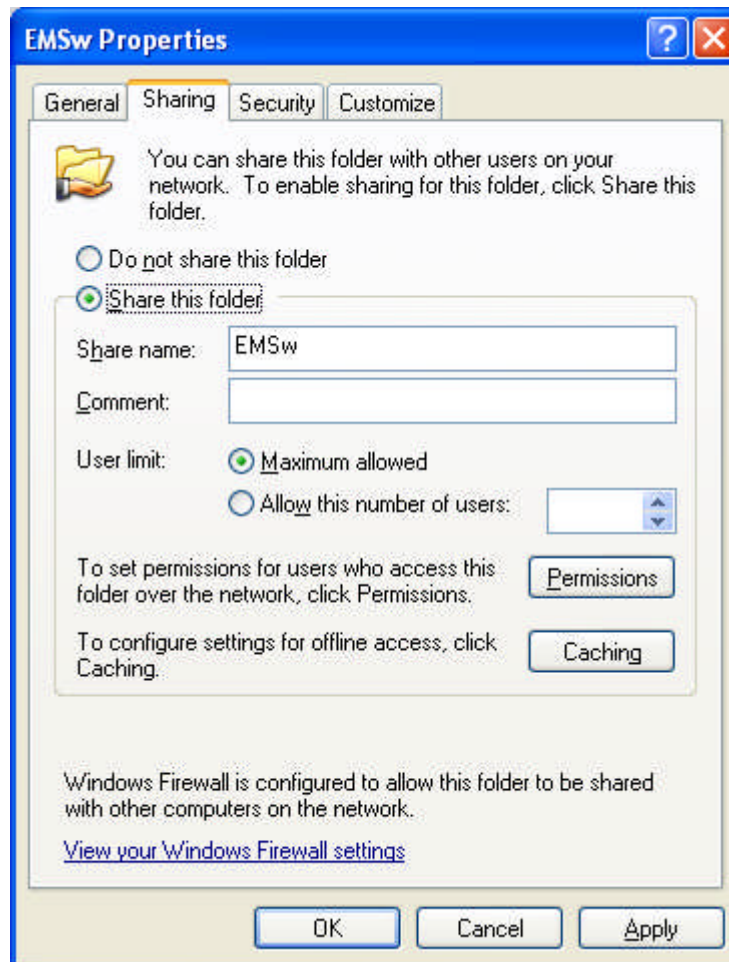
7 Moving EMS to a new server

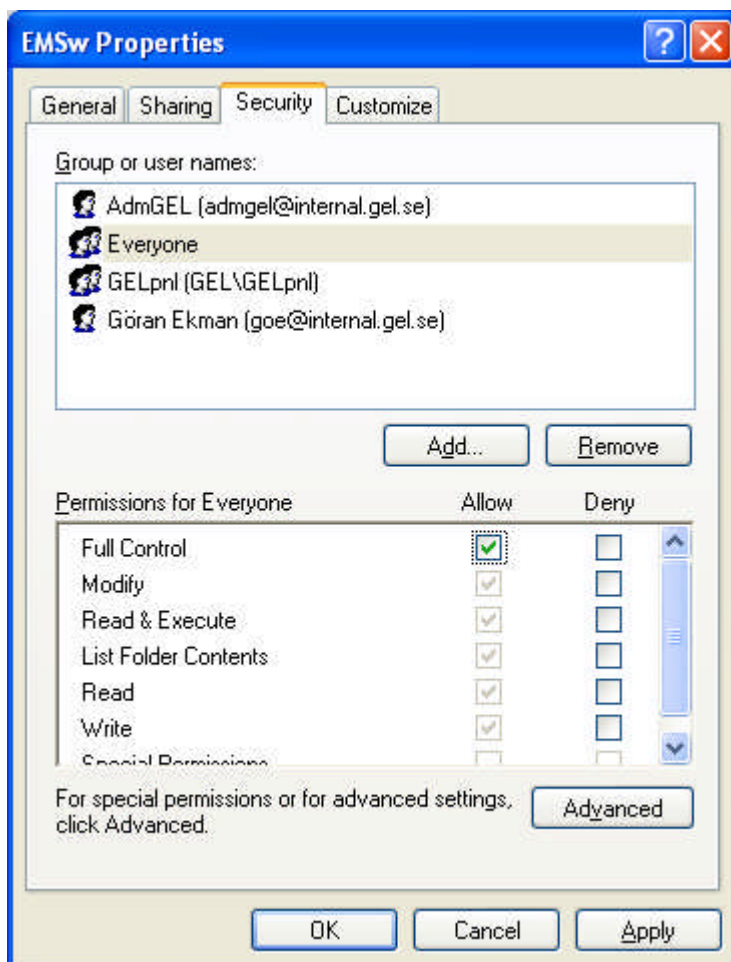
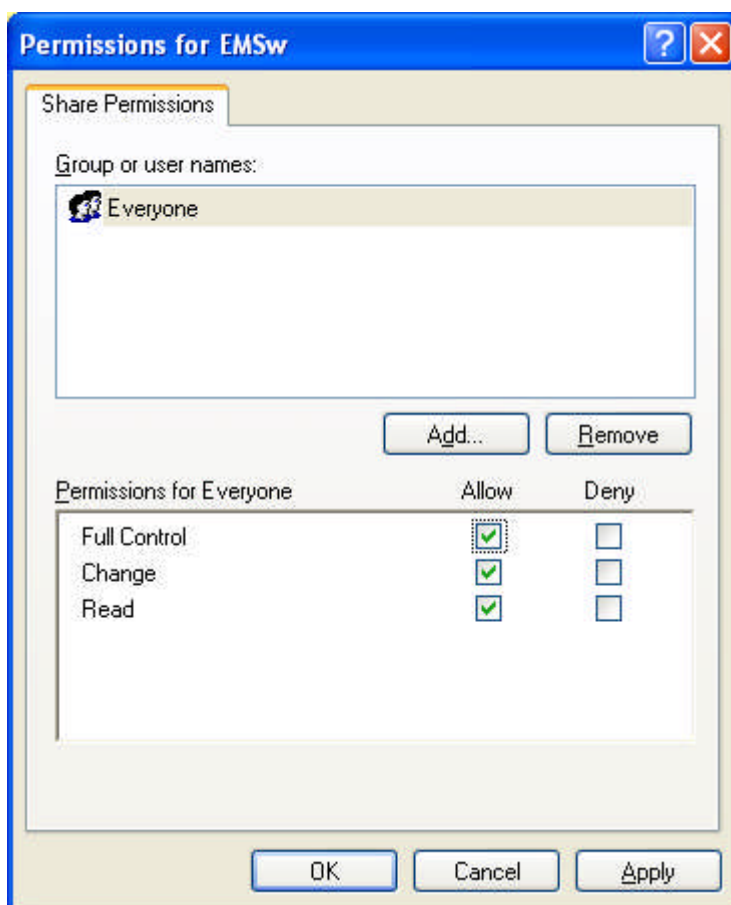
7.1 Install EMS server parts

Follow the instructions in chapters above.

7.2 Share the CommonDir on the server

The share should be available to all EMS users and they should have **Full control**.



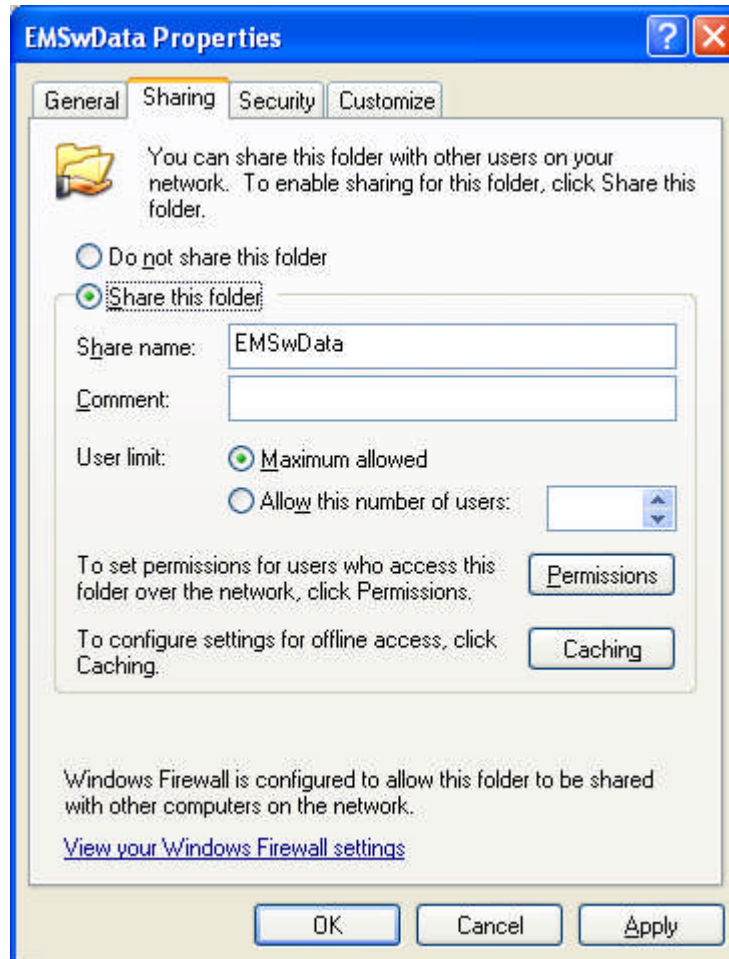


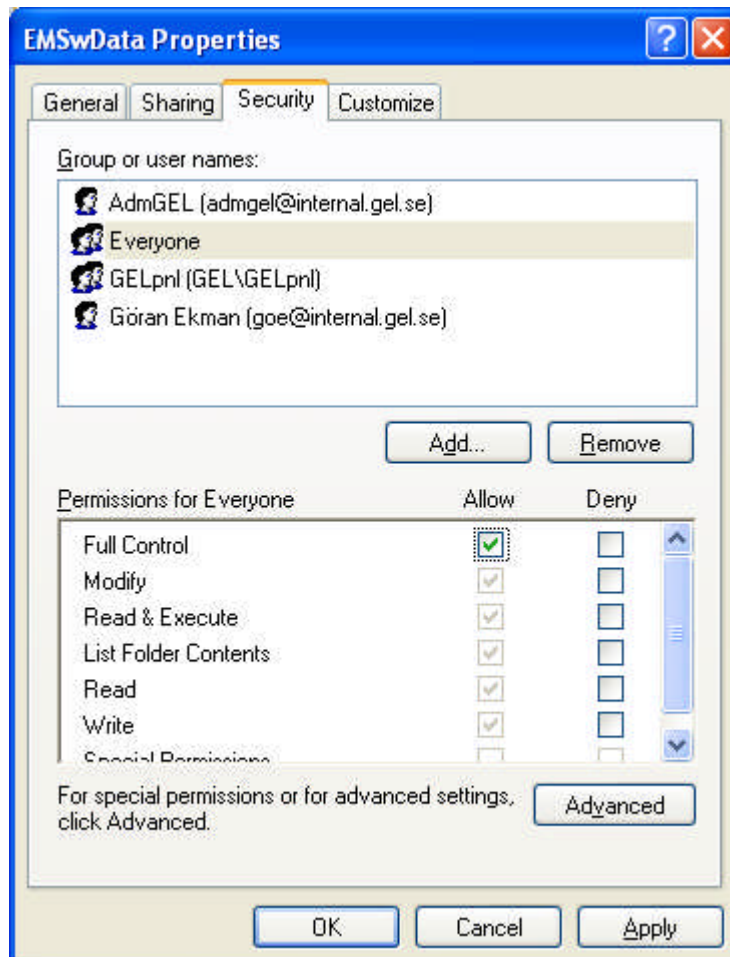
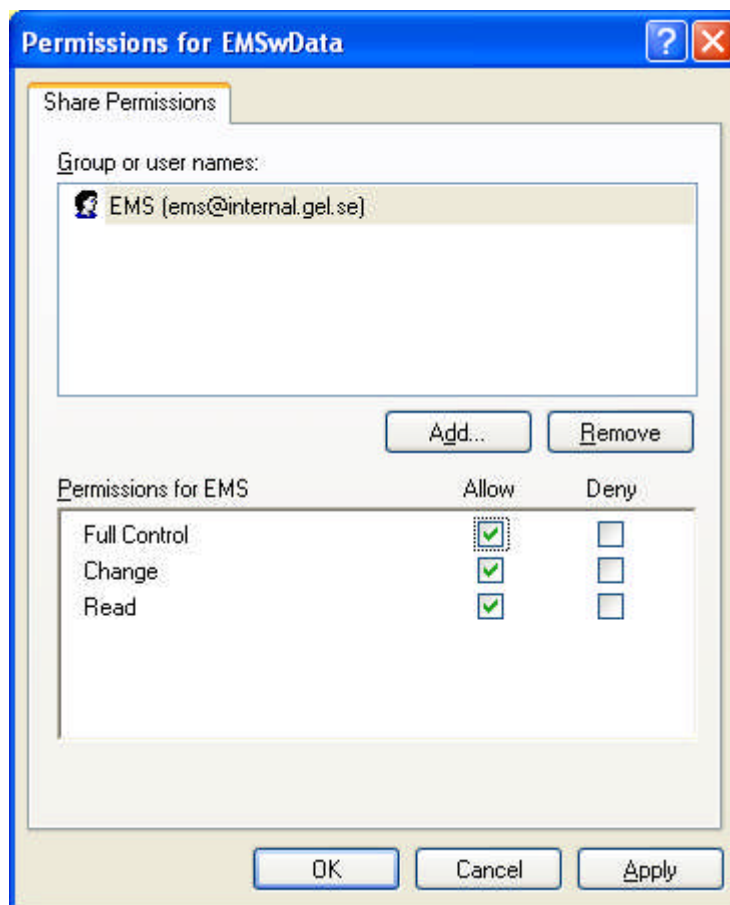


7.3 Share the EMSwData on the server

This share is for the EMS superuser/admin only.

BUT: all the **security** must be Full control for everyone.

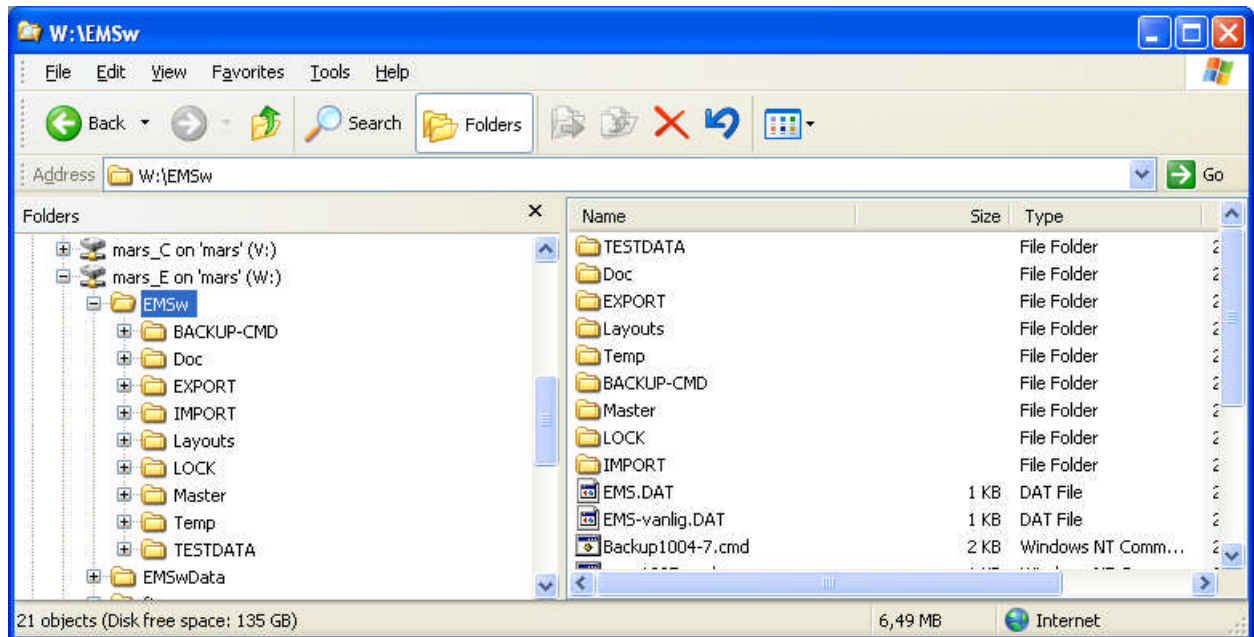






7.4 Copy the old content

Copy the whole directory **\EMSw** from the old server to the new server (replacing the content on the new server).



7.5 Make sure no users are logged on to EMS.

This step is important.

7.6 Create a backup copy of the database

Use any of the CMD file that is available on the old server.

7.7 Stop the IB/FB service on the old server

Go to Start/Settings/Control Panel/Administrative Settings/Services on the OLD server and stop the Interbase/Firebird services.

7.8 Copy the database

Copy the backed up database file from the OLD server (in the directory **\EMSwData**) and put it in the new server's **\EMSwData** directory.

7.9 Run restore

Run the corresponding RESTORE CMD file to restore the database on the new server.

DONE!